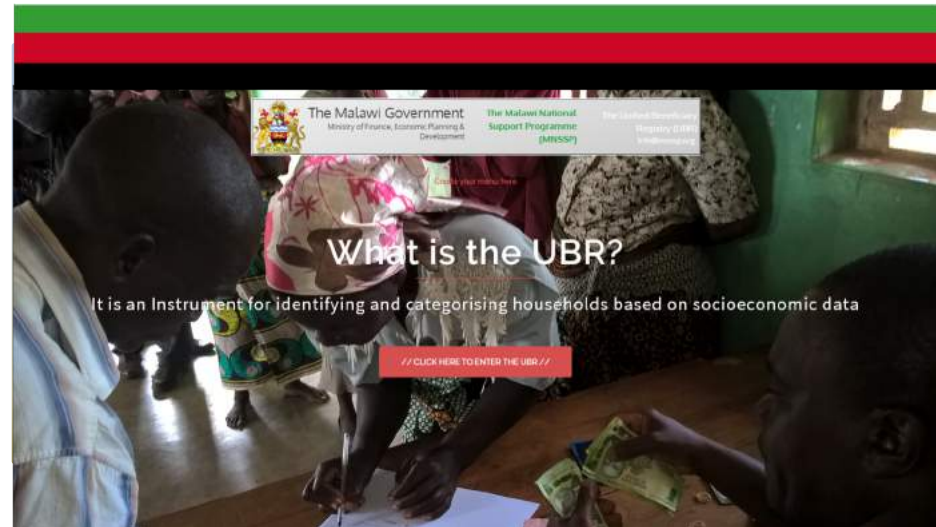


Beyond Social Registries: Integrated Data Management- The Case of Malawi



Ms. Suzgo Luhanga-Tchuwa

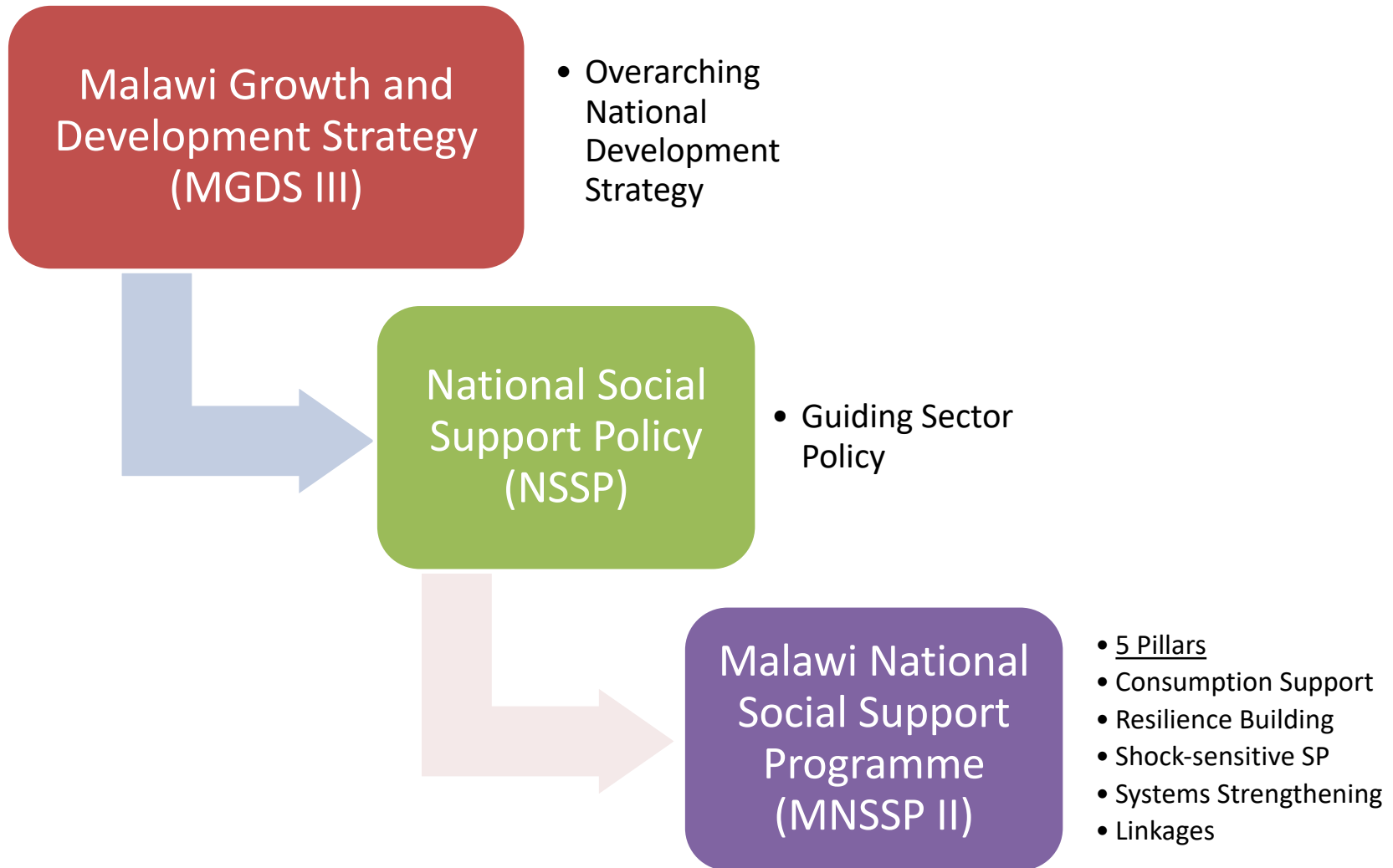
Chief Economist- Poverty Reduction and Social Protection Division,
Ministry of Finance, Economic Planning and Development

Outline



- Policy Framework
- Evolution of Institutional Structures
- What the UBR is
- Key Features of the UBR
- Expected Benefits

Policy Framework



Evolution of the Institutional Structures



Separate
Committees

Separate Targeting
Criteria (various
Implementers)

Separate
Databases to
support SPPs
implementation

Evolution of the Institutional Structures



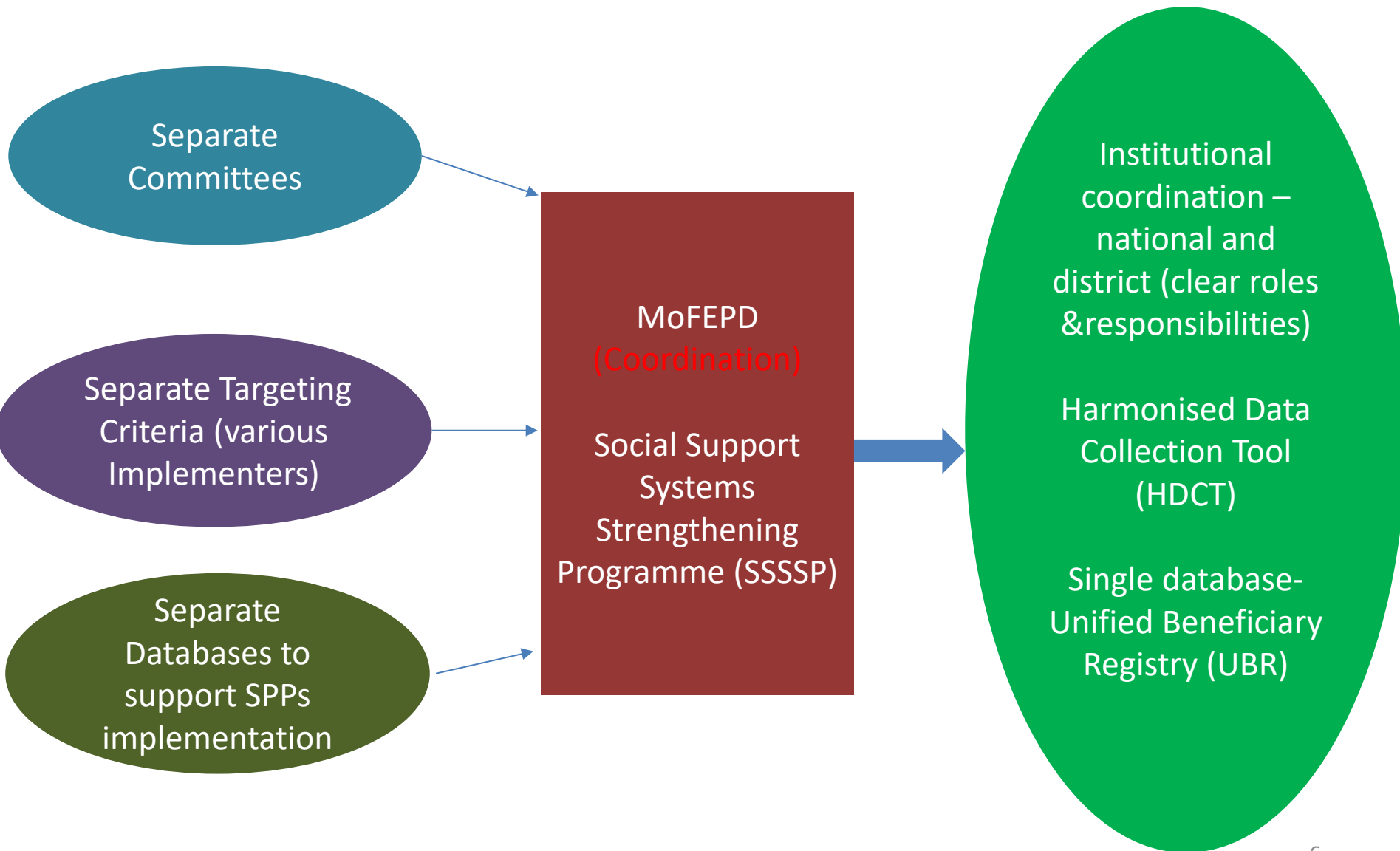
Separate
Committees

Separate Targeting
Criteria (various
Implementers)

Separate
Databases to
support SPPs
implementation

MoFEPD
(Coordination)
Social Support
Systems
Strengthening
Programme (SSSSP)

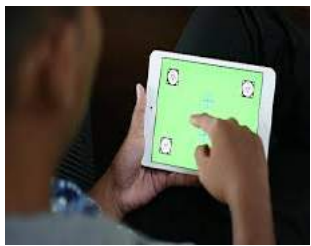
Evolution of the Institutional Structures



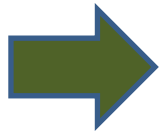


Unifed Beneficiary Registry

Capture. Share. Coordinate. Harmonize.



Data Collection



PWP



SMP
VSL
MF



SCT



Other programmes



Key Features of the UBR



- **Government ownership**
- **Collaborative approach** (development, management and resourcing)
 - UBR TF, NTT
- **Sustainability**
 - Knowledge transfer to local experts
 - Use of existing institutional structures
- **Multi-purpose** (beyond SPPs)
- **Quality**
 - NSO, NRB
 - Independent Assessments
- **Data privacy and security**
 - UBR Data Sharing Protocols and Procedures
 - IT Security Protocols and Procedures

Expected Benefits



- **Coordination**
 - Harmonised instruments (targeting, payments, GRMs, etc.)
 - Resource Pooling
- **Inclusiveness**
 - 100% targeting
 - Linkages and complementarities
- **Transparency**
 - Feedback loop
- **Cost-saving**
 - Harmonised data collection
- **Shock-sensitivity**
 - Vertical and Horizontal Expansion (humanitarian)
- **Accountability**
 - Resources
 - Programme Effectiveness – impact evaluation, graduation tracking



www.ubr.mnssp.org