



# Global Forum on Adaptive Social Protection

Protecting lives and livelihoods in times of crisis

13-15 June 2023 • Berlin

## Parallel Session 3

Adaptive Social Protection: A key lever for responding to climate-related loss and damage

This session is hosted by



Federal Ministry  
for Economic Cooperation  
and Development



**UNU**  
**EHS**



Federal Ministry  
for Economic Cooperation  
and Development



**WORLD BANK GROUP**  
Social Protection & Jobs



# Framing

## Introduction to Loss & Damage and the UNFCCC process

Sönke Kreft, Executive Director, MCII / Head of Unit, United Nations University



# Framing

Delivering Loss & Damage support: The opportunity of Adaptive Social Protection

Christian Bodewig, Practice Manager for Social Protection & Jobs for West & Central Africa, World Bank



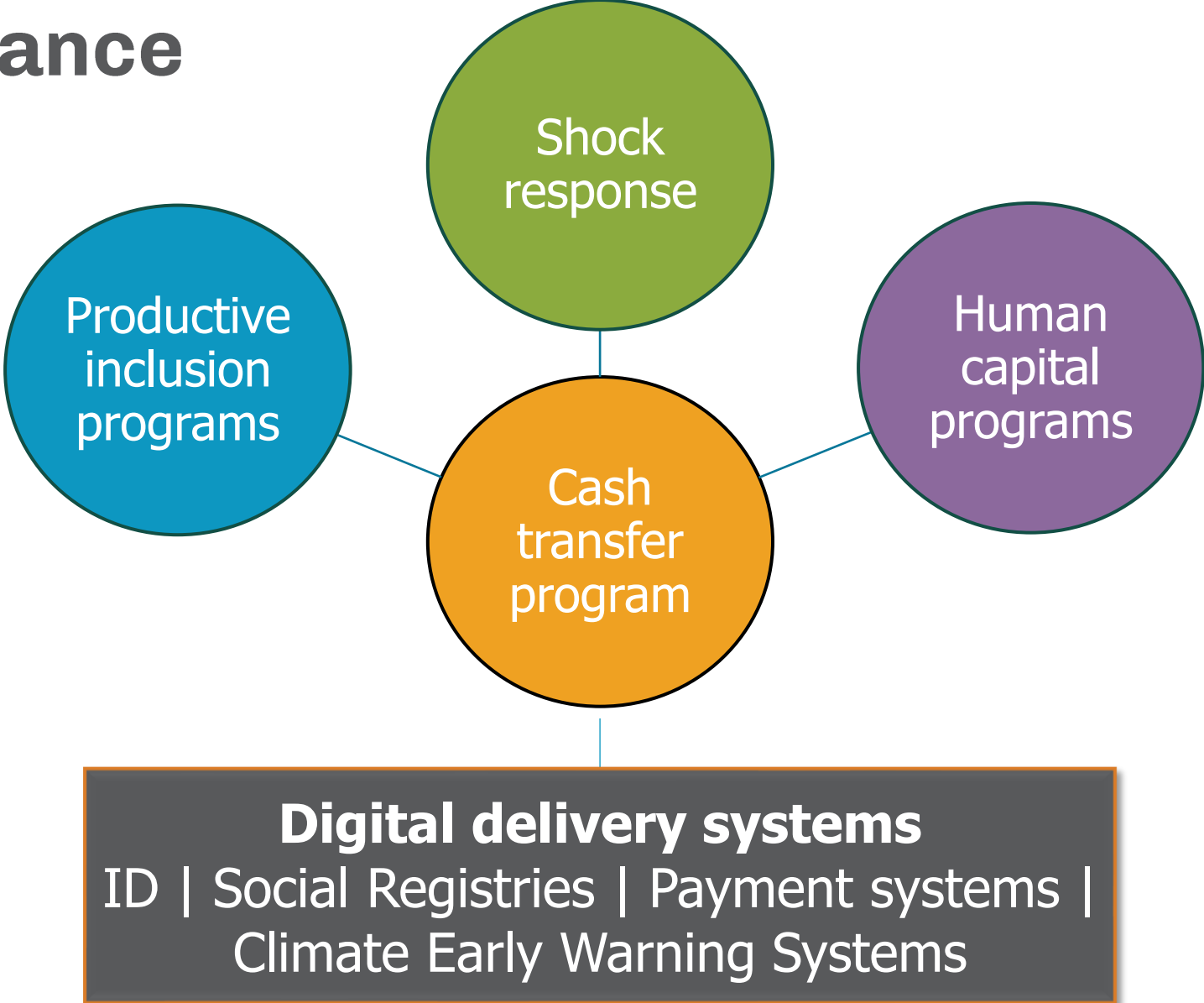
# The pitch

- Growing **vulnerability to slow and fast onset climate shocks** undermine poverty reduction, human capital
- Need to **build adaptive capacity of households** and promote sustainable livelihood opportunities
- Governments need to internalize crisis resilience through **national, government-led ASP systems**
- Build and then **leverage ASP systems to deliver loss and damage support** – as the only mechanism to get support to poor and vulnerable households at scale

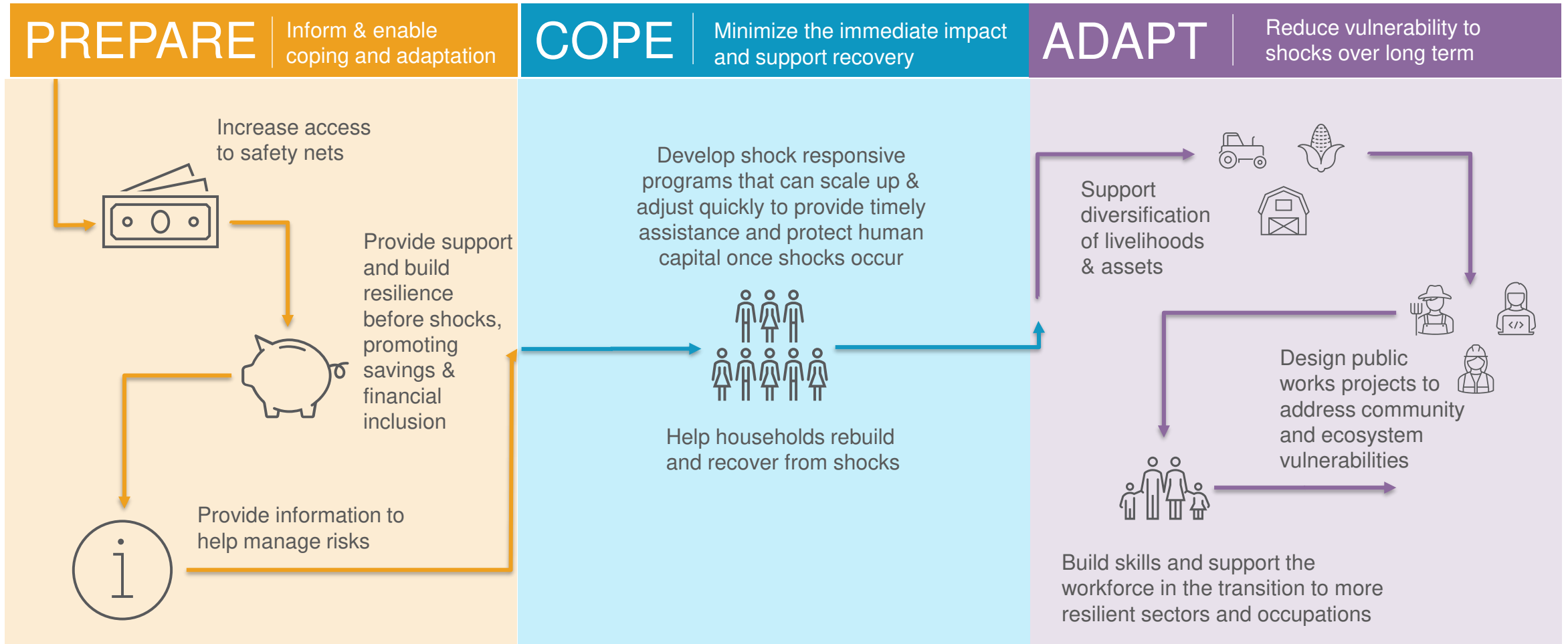


# ASP at a glance

A **household-targeted** package of measures to build **productive livelihoods, resilience to shocks, opportunities for the next generation**



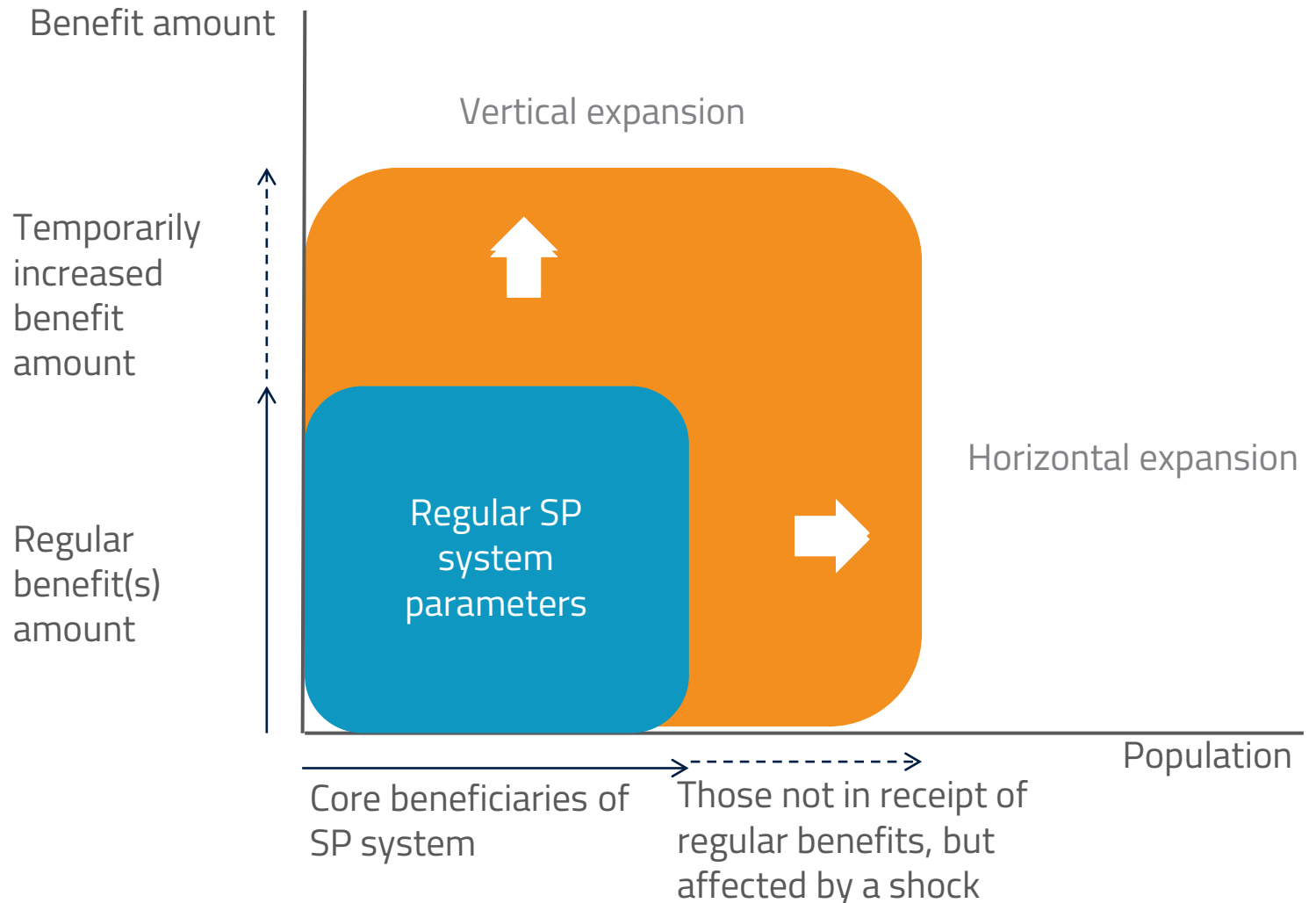
# How can ASP help?



# Shock response through swift expansions

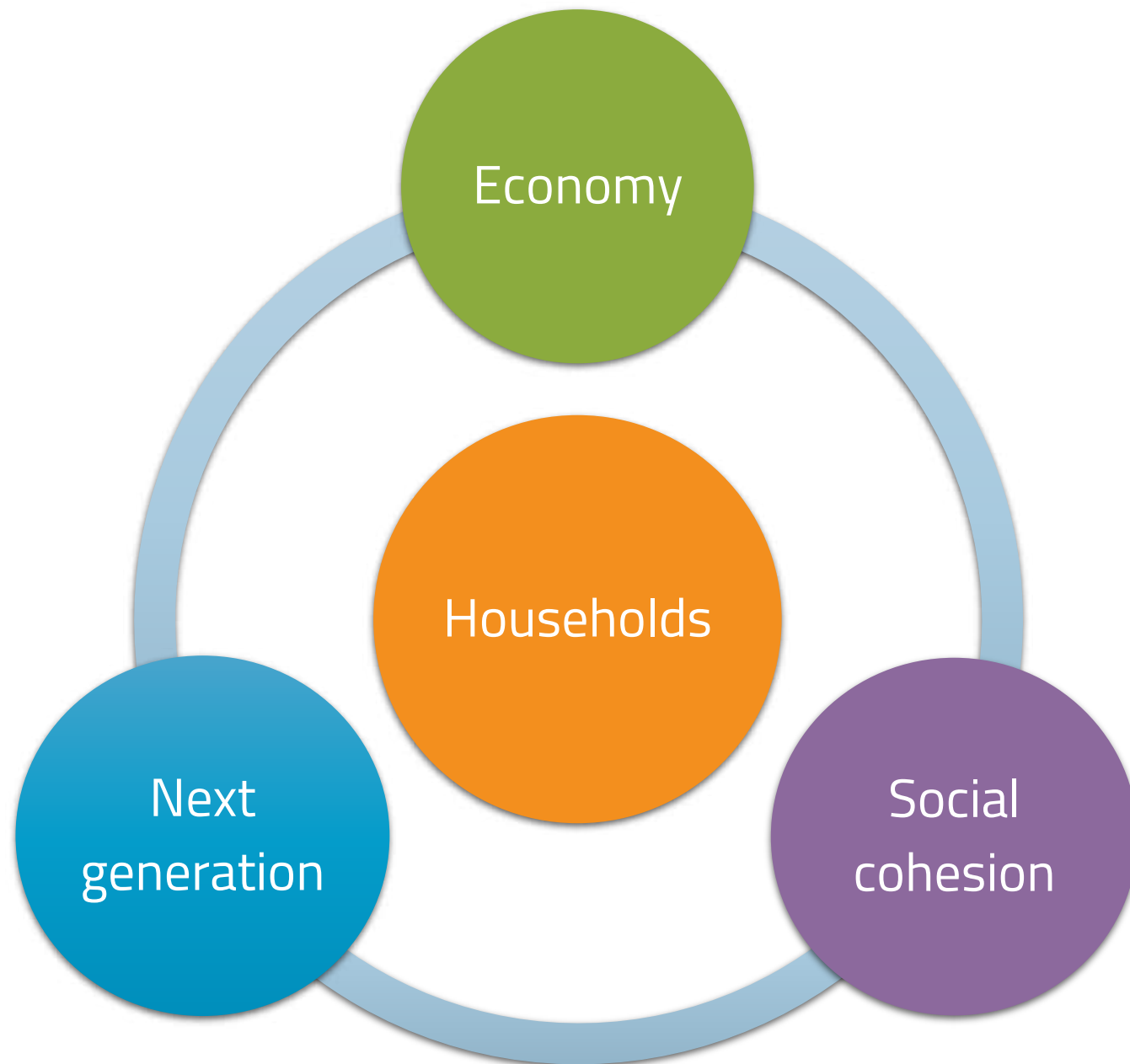
**Vertical expansion:** more assistance to existing beneficiaries that have been affected by a shock

**Horizontal expansion** temporarily after a shock to include new households based on eligibility from a shock's impacts





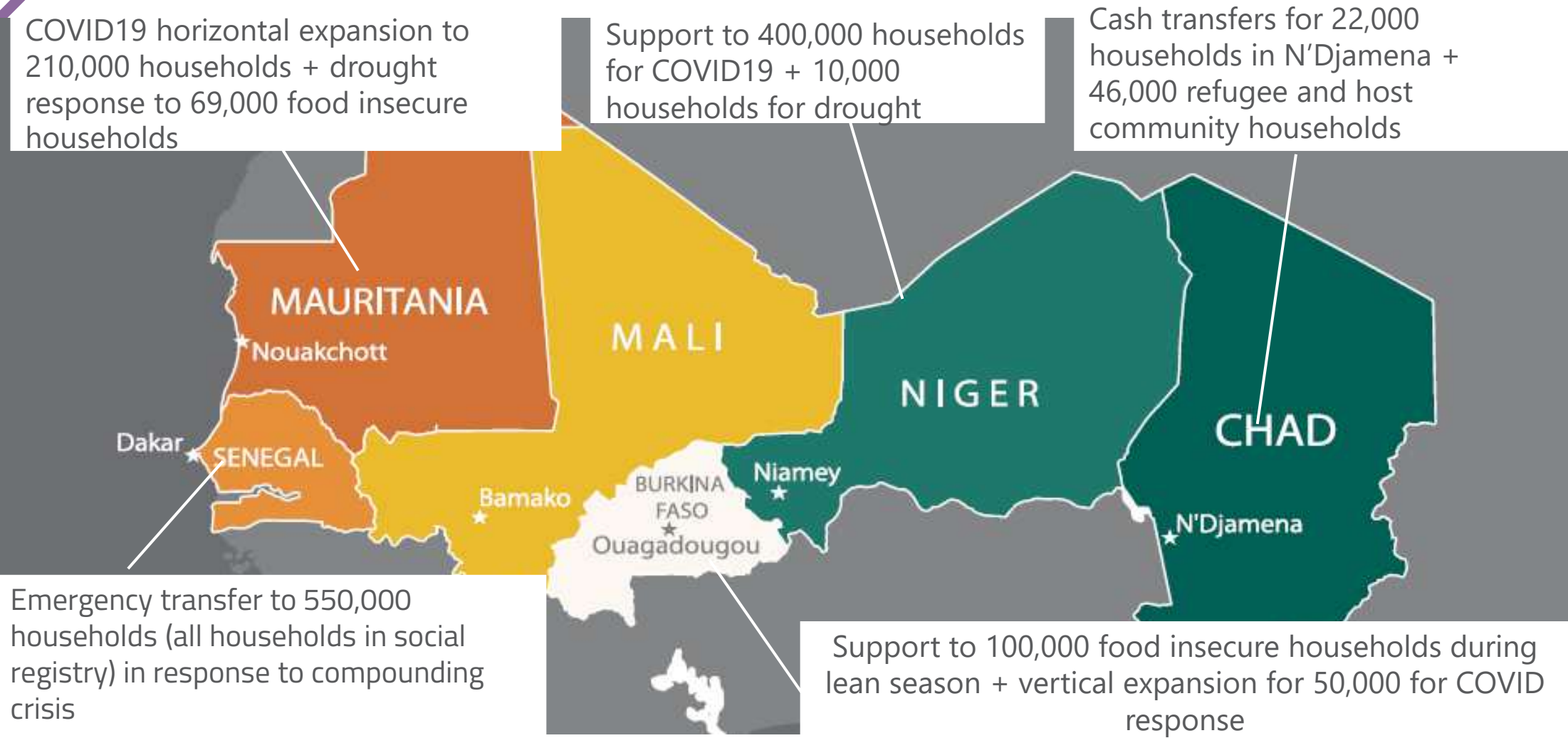
# Impacts across multiple objectives







# The Sahel: a laboratory for ASP





## Leveraging ASP for Loss & Damage: What does it take?

1. Invest in **building robust government-led ASP systems (the “plumbing”)** to be “ready for L&D”
  - Clear institutional arrangements
  - Wide-coverage, dynamic social registries
  - Programs at scale with digital delivery
  - Robust financing mechanisms
2. Use existing ASP systems to **deliver L&D support** at little extra cost



# Panel Discussion

Moderated by Reinhard Palm (BMZ)

## Panelists in Bonn

- **Rosa Perez**, Member of Transitional Committee, Philippines
- **Jens Fugl**, Member of Transitional Committee, Denmark

## Panelists in Berlin

- **Naveed Akbar**, Director General, NSER/CCT, Benazir Income Support Programme, Government of Pakistan
- **Christian Bodewig**, World Bank, Practice Manager for Social Protection & Jobs for West & Central Africa, World Bank
- **Sayanti Sengupta**, Technical Advisor on Social Protection & Climate, Red Cross Red Crescent Climate Centre

# Thank you!

15 June 2023



**Global Forum on  
Adaptive Social Protection**  
Protecting lives and livelihoods  
in times of crisis

13–15 June 2023 • Berlin



Federal Ministry  
for Economic Cooperation  
and Development



**THE WORLD BANK**  
IBRD • IDA | WORLD BANK GROUP

Implemented by:

**giz** Deutsche Gesellschaft  
für Internationale  
Zusammenarbeit (GIZ) GmbH

Supported by:



 socialprotection.org