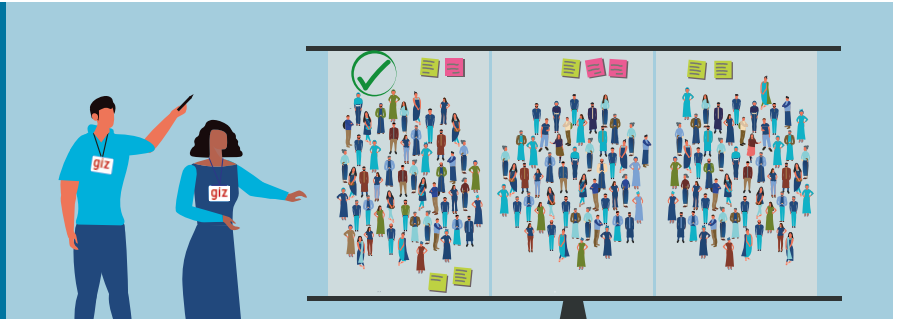


Step 1

Identifying a community where a Dialogue could unlock change



Checklist for identifying a community

This checklist can help you narrow down your options when selecting a community:

- Individuals or groups in this community have tried to bring about change in relation to the issue you are interested in, but these efforts have not been successful or have gotten stuck.
- These individuals and groups are looking for new ways of working.
- Community leaders are open to the idea of the Generation Dialogue.
- The community is large enough that it will be possible to identify enough participants for the Community Consultations and Dialogue sessions (approximately 60 younger women, 60 younger men, 60 older women and 60 older men).
- The community is geographically accessible for GIZ staff, who will need to travel there regularly.
- There is no political or social unrest underway in the community which could undermine the establishment of a respectful dialogue between the generations and the sexes, e.g. by making it difficult for participants to concentrate on the process, by hindering the organisation of Public Meetings, or by making it difficult to secure the participation of community leaders.

This document is part of the Generation Dialogue toolkit which is available at health.bmz.de/generation_dialogue_toolkit